

# **KALLASTU**

## **MAGNIFICAT**

**PER**

**SOPRANO**

**E**

**QUARTETTO DI STRUMENTI A CORDA**

**op.8**

**1991**

~ 5'30"

# Magnificat

soprano e quartetto di strumenti a corda

Andrus Kallastu op. 8

$\text{♩} = 144$

Handwritten musical score for the first system. It includes staves for V-no I, V-no II, V-la, V-c, (CB), and S. The V-c staff has the instruction "Contrabasso tacet 1-57". Dynamics include pp and ppp.

Handwritten musical score for the second system. It includes staves for V-no I, V-no II, V-la, V-c, and a lower staff. The V-c staff has the instruction "senza metra". The lower staff has the instruction "Mag - ni - fi - cat a -". Dynamics include p, pp, and ppp. The section is marked "rubato" and "a tempo".

Handwritten musical score for the third system. It includes staves for V-no I, V-no II, V-la, V-c, and a lower staff. The V-c staff has the instruction "senza metra". The lower staff has the instruction "Mag - ni - fi - cat a -". Dynamics include p, pp, and ppp. The section is marked "rubato" and "a tempo".

ni - ma me - a Do - mi - num. Et e - xul -

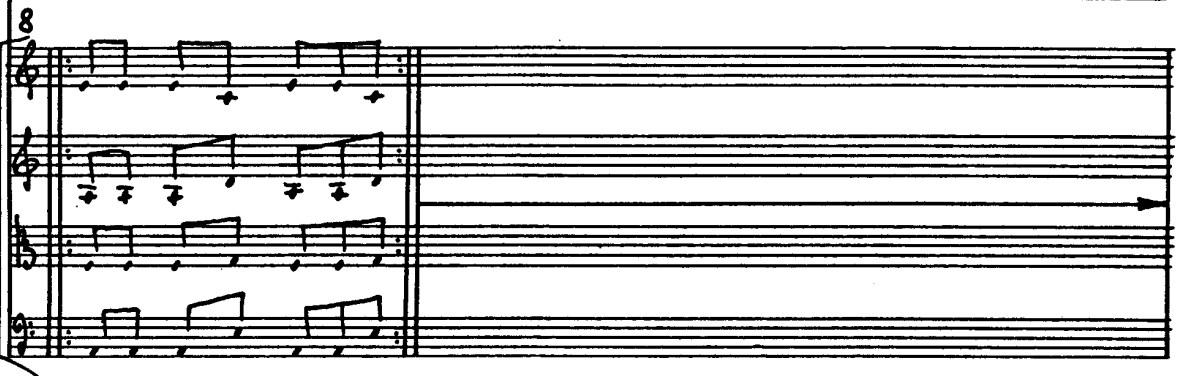
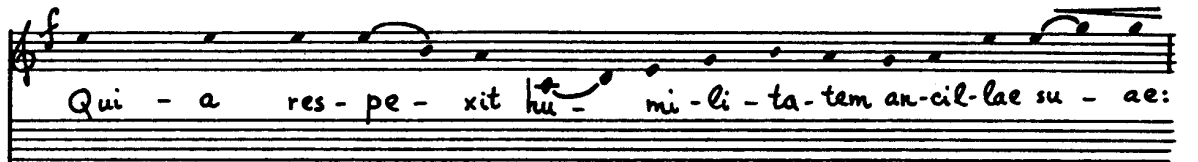
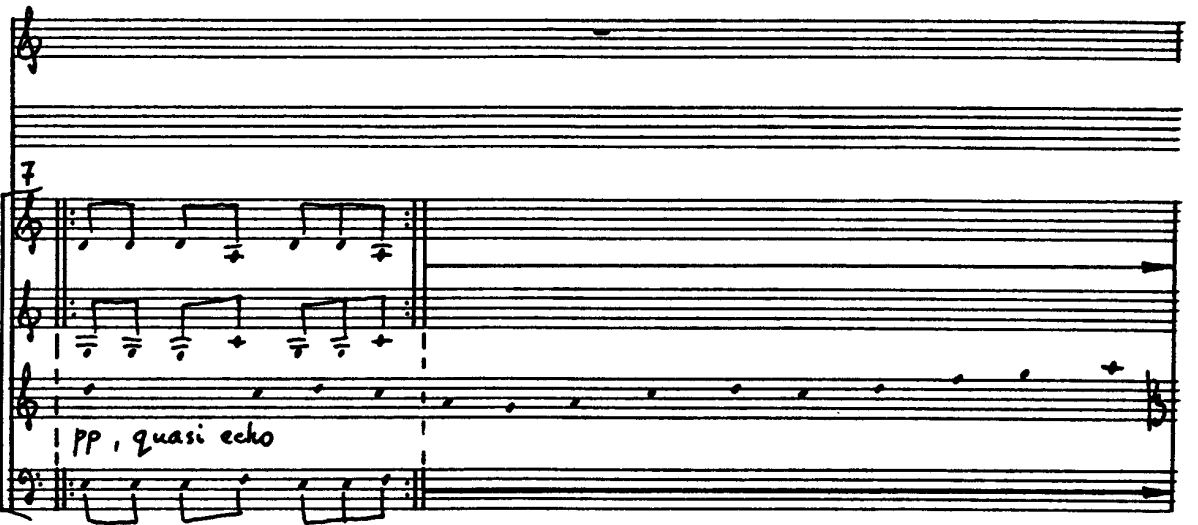
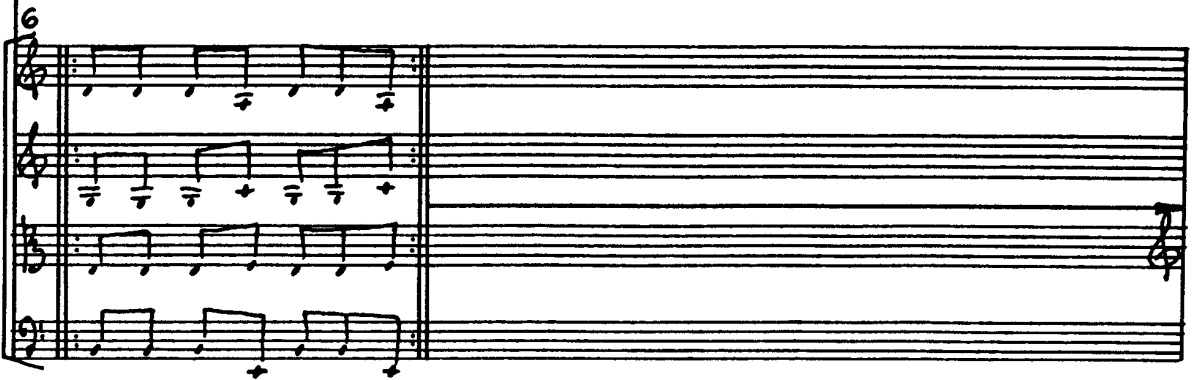
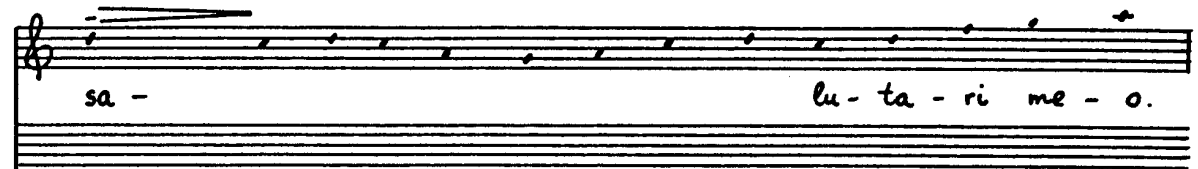
ta -

accel.

rit a tempo

vit spi - ri - tus me - - - us in De-o

(osak) - - - vit spi - ri - tus me-us in De-o



6

ec - ce e - nim hoc be - a - tam me di - cent

9

om - nes ge - ne - ra - ti -

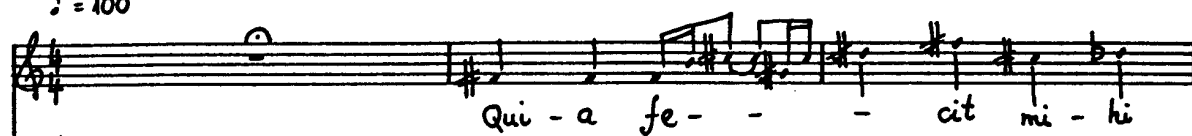
10

O - nes.

11

3x

♩ = 100

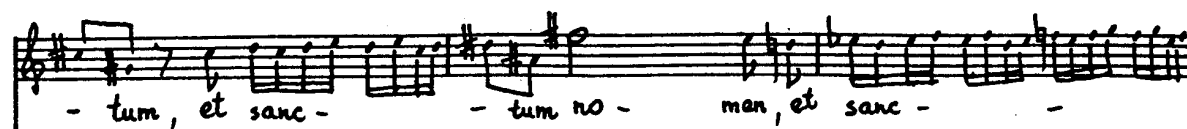


♩ = 100

mag-na qui po - tens est: et sanc - - tum no -

- men ei - us, et sanc -

arco  
p  
arco  
p  
arco  
p  
pizz.  
pizz.  
pizz.  
pizz.



Handwritten musical score for voice and piano, measures 21-23. The voice part is on a single staff with lyrics: "- tum no - - men ei - us.". The piano accompaniment consists of two staves. The right hand plays a series of eighth notes in the right hand and a series of eighth notes in the left hand, both in a descending pattern. The key signature has one sharp (F#) and the time signature is 4/4. Performance markings include "arco", "pizz.", and "pp".

Handwritten musical score for piano, measures 24-26. The piano accompaniment consists of two staves. The right hand plays a series of eighth notes in the right hand and a series of eighth notes in the left hand, both in a descending pattern. The key signature has one sharp (F#) and the time signature is 4/4. Performance markings include "f" and "p".

Handwritten musical score for piano, measures 27-29. The piano accompaniment consists of two staves. The right hand plays a series of eighth notes in the right hand and a series of eighth notes in the left hand, both in a descending pattern. The key signature has one sharp (F#) and the time signature is 4/4. Performance markings include "f", "p", "sub ppp", and "cresc."

Handwritten musical score for a choir and piano. The score is written on multiple staves, with the vocal parts (Soprano, Alto, Tenor, Bass) and piano accompaniment. The tempo is marked  $\text{♩} = 144$ . The key signature is one sharp (F#).

The score is divided into three systems:

- System 1 (Measures 30-32):** Features complex rhythmic patterns with many beamed notes. A *cresc.* marking is present.
- System 2 (Measures 33-35):** Continues the complex rhythmic patterns. Multiple *cresc.* markings are present across the staves.
- System 3 (Measures 36-38):** The piano part continues with complex rhythms, marked *pp* and *ppp*. The vocal part has the lyrics: *Et mi-se-ri-cor-di-a ei-us a*.

The score concludes with a large arrow pointing to the right, indicating the continuation of the piece.



Handwritten musical score for measures 37-40 of 'Gloria in excelsis Deo' by J. S. Bach. The score is for a four-part vocal setting (Soprano, Alto, Tenor, Bass) and a basso continuo. The key signature is one sharp (F#), and the time signature is common time (C). The tempo is marked 'Allegro' and the metronome marking is '♩ = 400'. The lyrics are: 'ti - am in bra - chi - o su - o; dis - per -'.

Handwritten musical score for 'The Rose Tree'. The score is written on five staves. The first staff is the vocal line, starting with a treble clef and a key signature of one flat (B-flat). The second staff is the piano accompaniment, starting with a treble clef and a key signature of one flat. The third staff is the piano accompaniment, starting with a bass clef and a key signature of one flat. The fourth staff is the piano accompaniment, starting with a bass clef and a key signature of one flat. The fifth staff is the piano accompaniment, starting with a bass clef and a key signature of one flat. The score includes various musical notations such as notes, rests, and dynamic markings like 'sub pp' and 'pp'. The tempo is marked 'Allegretto' and the time signature is 3/4. The score is numbered 40 in the top left corner.

Handwritten musical notation on a single staff. The lyrics below the staff are: - sit su-per - - - bos man-te cor- - - dis su-i. De-

Handwritten musical notation on four staves. The first staff begins with the number 43. The notation includes various musical symbols such as notes, rests, and accidentals.

Handwritten musical notation on two staves. The lyrics below the staves are: po - su - it po - ten -

Handwritten musical notation on four staves. The first staff begins with the number 46. Above the staves, the word *pizz.* is written multiple times. Above the second staff, the word *arco* is written. The lyrics below the staves are: tes de-se-de, et ex-al-ta -

Handwritten musical notation on four staves. The first staff begins with the number 49. Above the staves, the word *secco* is written. The notation includes dynamic markings such as *p* and *ff*.

[illegible]

Handwritten musical score for the vocal soloist and piano accompaniment. The score is for a vocal soloist and piano accompaniment. It features complex piano textures with arpeggiated chords and rapid sixteenth-note passages. The tempo is marked "a tempo (♩ = 100)". The lyrics "Sus - ce - pit I - sra-el pu - e - rum su -" are written below the vocal line.

58 a tempo ( $\text{♩} = 100$ )

Handwritten musical score for measures 58-61. The score is in 4/4 time with a tempo marking of "a tempo" and a quarter note equal to 100 beats per minute. It features four staves: three for piano (pp) and one for voice (vc). The piano parts consist of dense, rhythmic patterns of eighth and sixteenth notes. The voice part has a melodic line with some rests and a "sim." (sostenuto) marking. The bottom staff has a "pp (cb)" marking and some rhythmic notation.

um, re-cor-da-tus mi - se-ri - cor - di-ae

62

dim.

su - ae. Si - cut lo - cu - tus

66

est ad Pa-tres nost - ros, Ab -

70

ppp

- ra - ham et se - mi - ni ei - us in

sae - cu - la.

Glo - ri - a Pat - ri et Fi - li - o et Spi -

84 *ppp*

*p*

*p*

*ppp*

poco rubato a tempo

ri - tu - i Sanc - to.

85 colla parte a tempo

Si-cul e-rat in prin-ci-pi-o et nunc et sem -

89 secco

per, et in sae-cu-la sae -

93

cu - lo - rum. A - men,

97

a - men, a - men. A - men,

101

a - men, a - men. A -

105

*Contra div*

Handwritten musical score for a piano piece, featuring multiple staves with complex notation, including chords, arpeggios, and dynamic markings like "dim.", "cresc.", "ff", and "meno.".