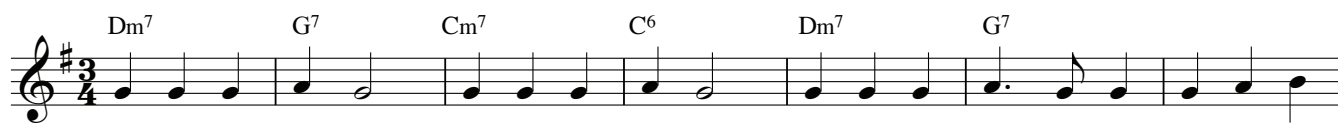


Liulaul

Ellen Niit

seadnud Kadri Hunt

♩. = 58 - 60



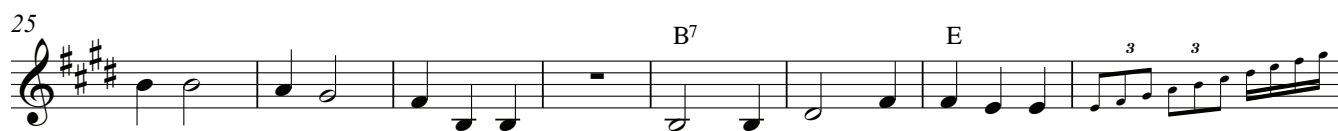
Kui sul on suu-sad, kui sul on ui-sud, mis sul - le loe - vad siis ti - ge-dad



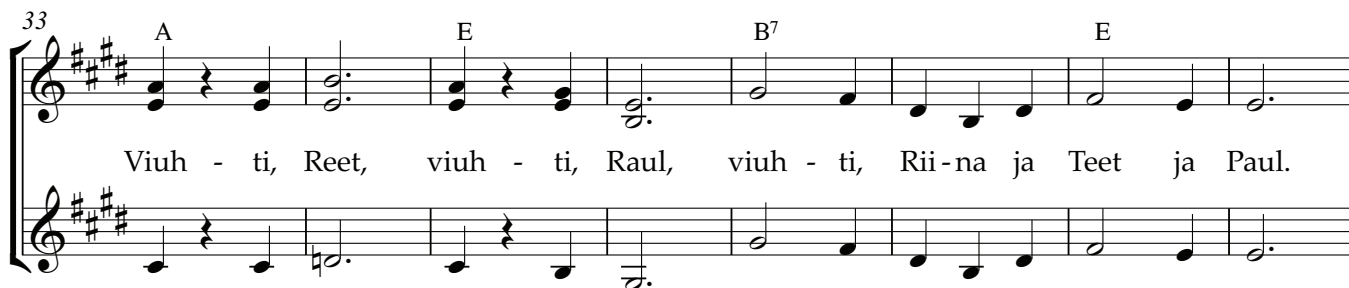
tui-sud!



Oh sa si - re hõ - be - siug, oh sa to - re rents - li - liug!



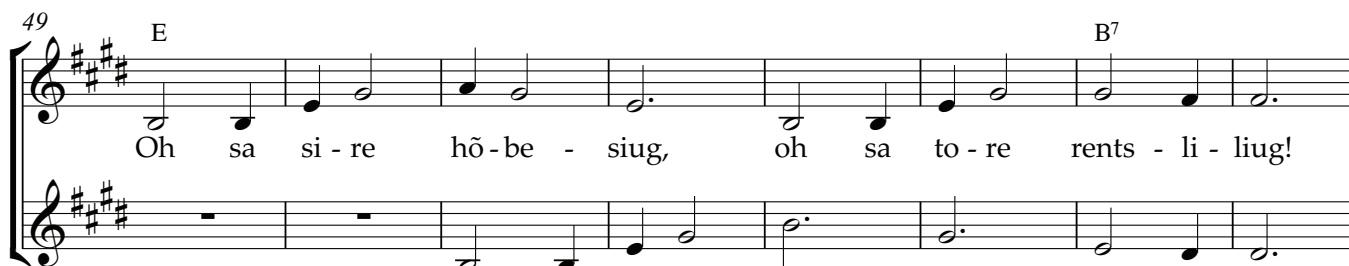
Sä - rav - si - le sil - lu - tis, jää peal päik - se - pil - lu - tis.



Viuh - ti, Reet, viuh - ti, Raul, viuh - ti, Rii - na ja Teet ja Paul.



Viuh - ti, Kai, viuh - ti, Kärt, viuh - ti, Pee - ter ja Kärt ja Märts.



Oh sa si - re hõ - be - siug, oh sa to - re rents - li - liug!

Oh, sa si - re, to - re rents - li - liug!