

NS TL. 10 06. tuleb kirjutada kokku üht
partiiisse (Te) juhul kui mõlemad on
"Uru ja Wanemuine"
ükskoostel on mitthoigi
mõne kirjanduse

NSVL Muusikafondi E. V. osakond

2272

1

I Vaatus.

H. A. Herman.

All *moderato* Koppel ja oosn.

Flauto

x Oboo

x Cl. in B

x Fagott

Cornio in F

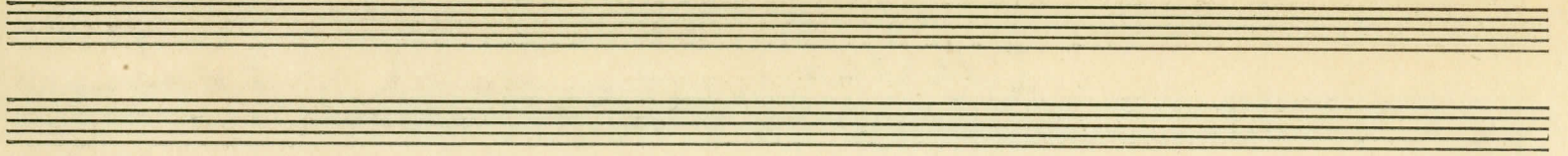
Trombio

Tromboni

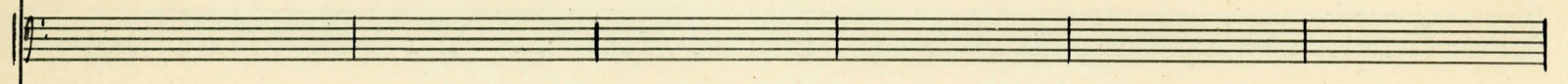
Timp. in C. g.

Piano

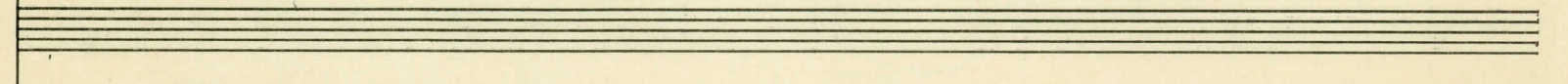
x Archi



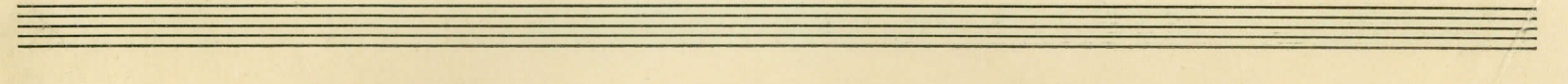
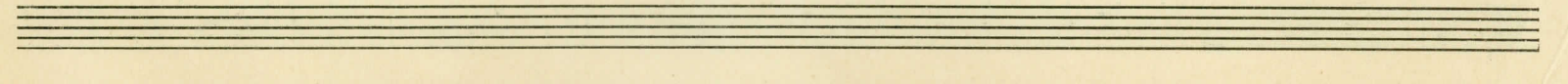
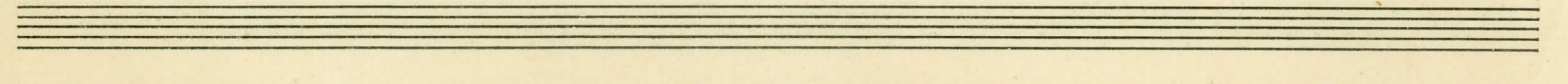
x
x
x



Endel



x
x
x
x



1

X
X
Y

Musical notation for the first system, featuring a treble clef and a piano (p) dynamic marking. The notation includes a series of notes with slurs and rests, set against a background of chords.

Empty musical staves for the second system.

Endel

Tule, tu-le tu-vi-ke-ne, tule il-lu-si, il-mu hingo i-lu-ke-ne
 Ara nõnda kurvast laulda kau-ni-ke-ne ara beina linnakese

1

Musical notation for the second system, featuring a treble clef and a piano (p) dynamic marking. The notation includes a series of notes with slurs and rests, set against a background of chords.

Musical notation for the third system, featuring a treble clef and a piano (p) dynamic marking. The notation includes a series of notes with slurs and rests, set against a background of chords.